



One Stop Solution for Quality Manufacturing

Our Purpose

We believe great quality manufacturing can bring out the best performance in every product. Whether it is to deliver the optimal performance below earth, ***generate clean energy or help land a plane,*** ***everything starts with a quality manufactured component.***

Why Rymsa

One stop solution for quality manufacturing

- Quality, customer service and excellence-oriented culture
- + 35 years of experience
- State of the art facility
- ISO 9001:2015 certified
- Reliable long-term partnerships
- International-business perspective



Why Rymsa

Strategically located in the center of Mexico

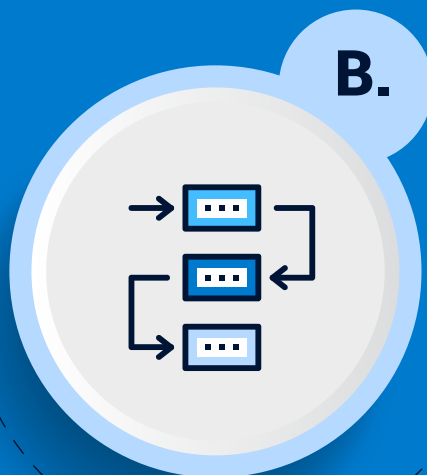
- International manufacturing hub
- Educated and highly skilled workforce
- Qualified supplier base
- North American transportation corridors
- International airport (passenger & cargo)



One Stop Solution for Quality Manufacturing

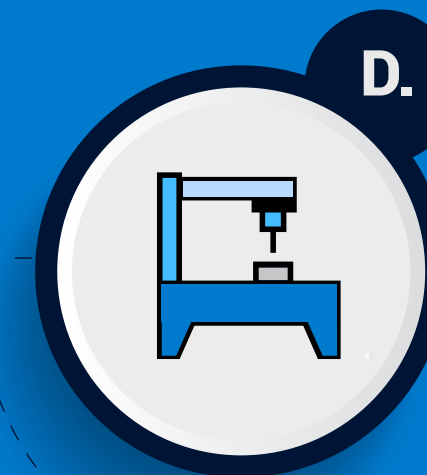
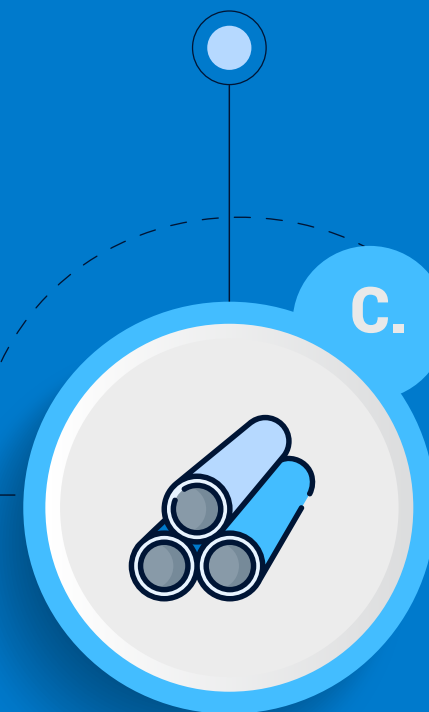
On time, quality, cost competitive turnkey products

Assess customer requirements



Define process plan

Raw material procurement



Production execution

External processes / Subprocesses



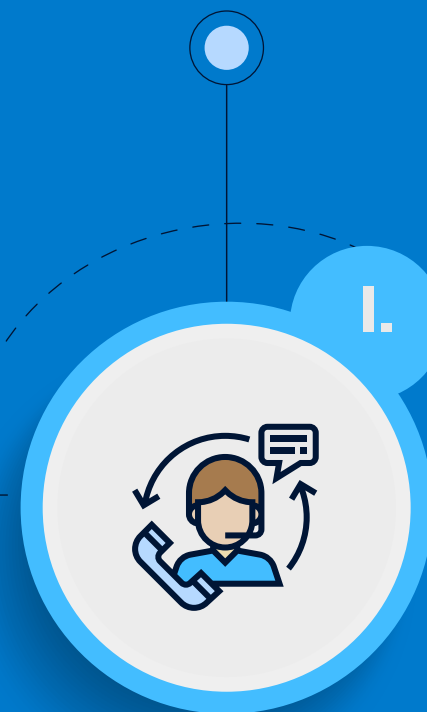
Integration and assembly

Product quality certification



Shipping & logistics

Customer services



Our expertise

Rymsa is a CNC precision machining company with a strong expertise manufacturing mill-turn parts.

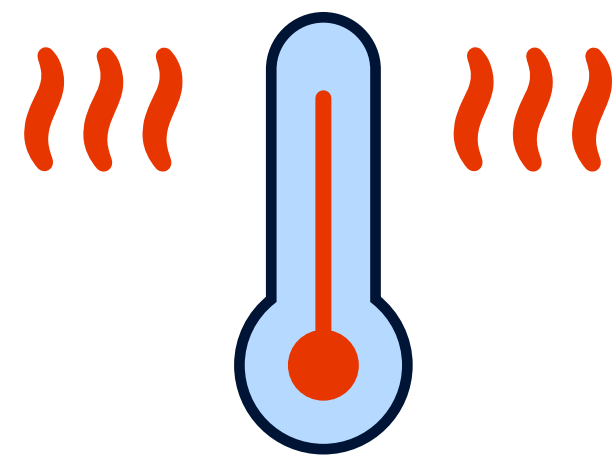
3, 4 & 5 Axis CNC mill-turn parts

- **Dimensions:** diameter 2 - 10", length 0.5" – 50"
- **Max tolerance:** 0.001"
- **Max roughness:** 16 microinches
- **Annual volumes:** 1,200 – 6,000
- **Materials:** carbon steels, carbon alloys, stainless steel, nonferrous, castings, forging and composites



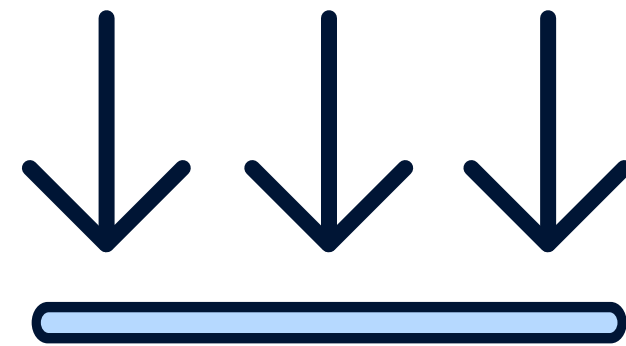
Subprocesses

Rymsa works hand by hand with a selected supplier base specialized in subprocesses ranging from heat, surface, and coating treatments to meet manufacturing requirements and guarantee compliance and quality in the most effective matter.



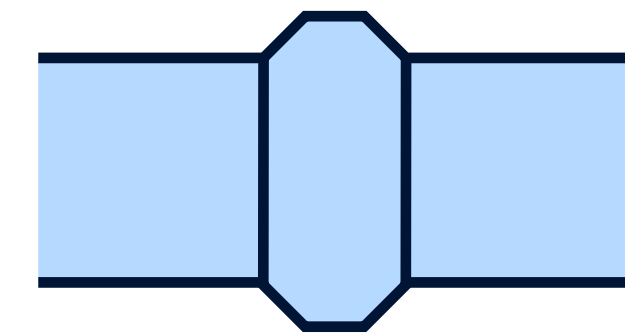
Heat treatments:

Quench and temper, annealing, QPQ, carburizing, nitriding, stress relieving, induction.



Surface treatments:

Glass bead peening, shot penning, sand blast.



Coating treatments:

Phosphate, molybdenum, xylan, zincplate, anodize, dry film, passivation

Manufactured Components

We have developed an integrated business model to offer a reliable one stop manufacturing solution to cover all aspect related to manufacture and delivery turnkey products with uncompromised quality.



Total assembly: machined parts, procurement of complement items, inspection and functional testing to deliver a full assembly product.



Material: Ductile Cast Iron
 Ø 4" [101.6 mm]
 L 5" [127 mm]
Special Processes: Zinc Phosphate coating



Material: 4140 75K PSI
 Ø 4" [101.6 mm]
 L 4" [101.6 mm]
Special Processes: Zinc Phosphate coating



Upper Slipping
 Ø 6" [152.4 mm]
 L 5.00" [31.75 mm]
Special Processes: Magnetic Particle Inspection



Material: 4140 75K PSI
 Ø 6" [152.4 mm]
 L 7" [177.8 mm]
Special Processes: Molybdenum disulfide



Parent Bowl
 Ø 6" [152.4 mm]
 L 1.25" [31.75 mm]
Special Processes: Magnetic Particle Inspection



Valve Part Bonnet
 Ø 6" [152.4 mm]
 L 1.25" [31.75 mm]
Special Processes: Magnetic Particle Inspection



Material: Titanium Ti - 6Al - 4V
 Ø 4" [101.6 mm]
 L 1" [25.4 mm]
Special Processes: FPI



Bonnet
 Ø 6" [152.4 mm]
 L 1.25" [31.75 mm]
Special Processes: Magnetic Particle Inspection



Tubing hanger body
 Ø 6" [152.4 mm]
 L 1.25" [31.75 mm]
Special Processes: Magnetic Particle Inspection

Build more, sell more and
grow more with Rymsa





Contact Us

Rene Trulin

rene.trulin@rymsa.net

Mobile: +52 442 219 6242

Armando Limon

armando.limon@rymsa.net

Mobile: +52 442 376 1104

Rymsa Manufacturing

Paseo Centenario del Ejército Mexicano km1+37, Condominio A, Lote 24

Terra Park Centenario, El Marqués, Querétaro, México. C.P. 76267